

NATIONAL 2000 SERIES

# *Defining* THE *Future.*



NATIONAL

NATIONAL SEATING



# Defining the Future.

We would like to introduce you to our latest line of seats, which we are confident will change the way you think about the seating industry today. The National 2000 Series from National Seating defines the future of our truck seat technology.

The 2000 Series seats are ergonomically designed to better fit the driver, offering them the comfort and support they need to keep them going over the long miles ahead. Years of research were spent designing and refining this seat, making sure that nothing was overlooked in our attempt to bring to the market the best seat that money can buy.

But don't just take our word for it, sit for yourself—in the best seat ever made by the best suspension seat manufacturer in North America.



## Premium Leather Series

- Improved shoulder support
- Contoured side bolsters
- Triple lumbar support
- Driver friendly controls
- Re-engineered seat base
- Genuine leather seat with perforated leather inserts

## Premium Series

- Same features as indicated in the Standard Series and:
- 6-way front cushion adjustment
- Power cushion and back bolsters
- Base shroud and bellows
- Triple lumbar support
- 6-button seat
- All Mordura cloth

## Standard Plus Series

- Same features as indicated in the Standard Series and:
- All Mordura cloth

## Standard Series

- Contoured cushions
  - 7" fore and aft slide
  - Front cushion adjustment
  - 6 to 23 degree incline
  - Power air lumbar
  - Rear cushion adjustment
  - Chugger snubber
- Available in mid- and low-back

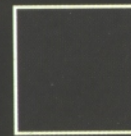
## PREMIUM LEATHER SERIES



Tan/Brown



Gray/Black



Black/Black



Gray/Gray



Gray/Red



Gray/Blue

### Premium Leather Series

Color	Seat Only	Left Arm	Right Arm	Seat w/Arms*
Gray/Gray	50060.51	231141-51L	231141-51R	50060.351
Gray/Red	50060.52	231141-52L	231141-52R	50060.352
Gray/Blue	50060.53	231141-53L	231141-53R	50060.353
Tan/Brown	50060.54	231141-54L	231141-54R	50060.354
Gray/Black	50060.55	231141-55L	231141-55R	50060.355
Black/Black	50060.56	231141-56L	231141-56R	50060.356

\* We now offer the option of ordering a seat with both armrests fully installed

**BackCycler® Option:** Add the letter "B" following the seat number to indicate BackCycler® Option. ( ex: 50060.51B )

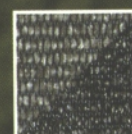
## PREMIUM SERIES



Brown



Black



Gray



Red



Blue

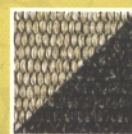
### Premium Series

Color	Seat #	Left Arm	Right Arm	Seat w/Arms*
2-Tone Gray	50060.61	231141-61L	231141-61R	50060.361
2-Tone Red	50060.62	231141-62L	231141-62R	50060.362
2-Tone Blue	50060.63	231141-63L	231141-63R	50060.363
2-Tone Brown	50060.64	231141-64L	231141-64R	50060.364
2-Tone Black	50060.65	231141-65L	231141-65R	50060.365

\* We now offer the option of ordering a seat with both armrests fully installed

**BackCycler® Option:** Add the letter "B" following the seat number to indicate BackCycler® Option. ( ex: 50060.61B )

# STANDARD PLUS SERIES



Brown



Black



Gray



Red



Blue

## Standard Plus Series

Color	Seat #	Left Arm	Right Arm	Seat w/Arms*
2-Tone Gray	50061.31	231141-31L	231141-31R	50061.331
2-Tone Red	50061.32	231141-32L	231141-32R	50061.332
2-Tone Blue	50061.33	231141-33L	231141-33R	50061.333
2-Tone Brown	50061.34	231141-34L	231141-34R	50061.334
2-Tone Black	50061.35	231141-35L	231141-35R	50061.335

\* We now offer the option of ordering a seat with both armrests fully installed

**BackCycler® Option:** Add the letter "B" following the seat number to indicate BackCycler® Option. ( ex: 50061.31B )

# STANDARD SERIES



Black



Gray

## Standard Series (Mid-Back)

Color	Seat #	Left Arm	Right Arm	Seat w/Arms*
Gray Vinyl	50059.01	231141-01L	231141-01R	50059.301
Black Vinyl	50059.05	231141-05L	231141-05R	50059.305
Gray Cloth	50059.31	231141-31L	231141-31R	50059.331
Black Cloth	50059.35	231141-35L	231141-35R	50059.335

## Standard Series (Low-Back)

Color	Seat #	Left Arm	Right Arm	Seat w/Arms*
Gray Vinyl	50194.01	231141-01L	231141-01R	50194.301
Black Vinyl	50194.05	231141-05L	231141-05R	50194.305
Gray Cloth	50194.31	231141-31L	231141-31R	50194.331
Black Cloth	50194.35	231141-35L	231141-35R	50194.335

\* We now offer the option of ordering a seat with both armrests fully installed

## 2000 SERIES FEATURES



### Ergonomic Seat Cushion

- Improved Leg Circulation
- Adjustable in Three Directions



### Contoured Bolsters

- Longer Cushion Life
- More Side Support



### Driver Friendly Controls

- Convenient Groupings of Controls
- Illustrations on Each Valve



### Enhanced Lumbar Support

- Fully Adjustable by Air
- Available in Single or Triple Chamber



### Integrated Head Rest

- Increased Height
- Improved Head Protection



### Re-engineered Base

- 25 percent wider
- Improved Side-to-Side Stability

## 2000 SERIES OPTIONS



### Skirt

# 428314-09



### Ratcheting Armrests

Refer to Ordering Guide



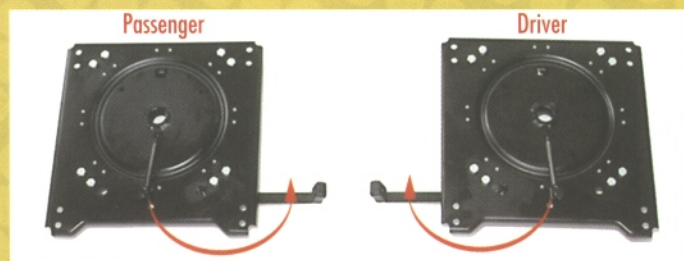
### Recline Limiting Bracket

# 230667-01



### BackCycler®

Seat Number + "B"  
(ex: 50060.51B)

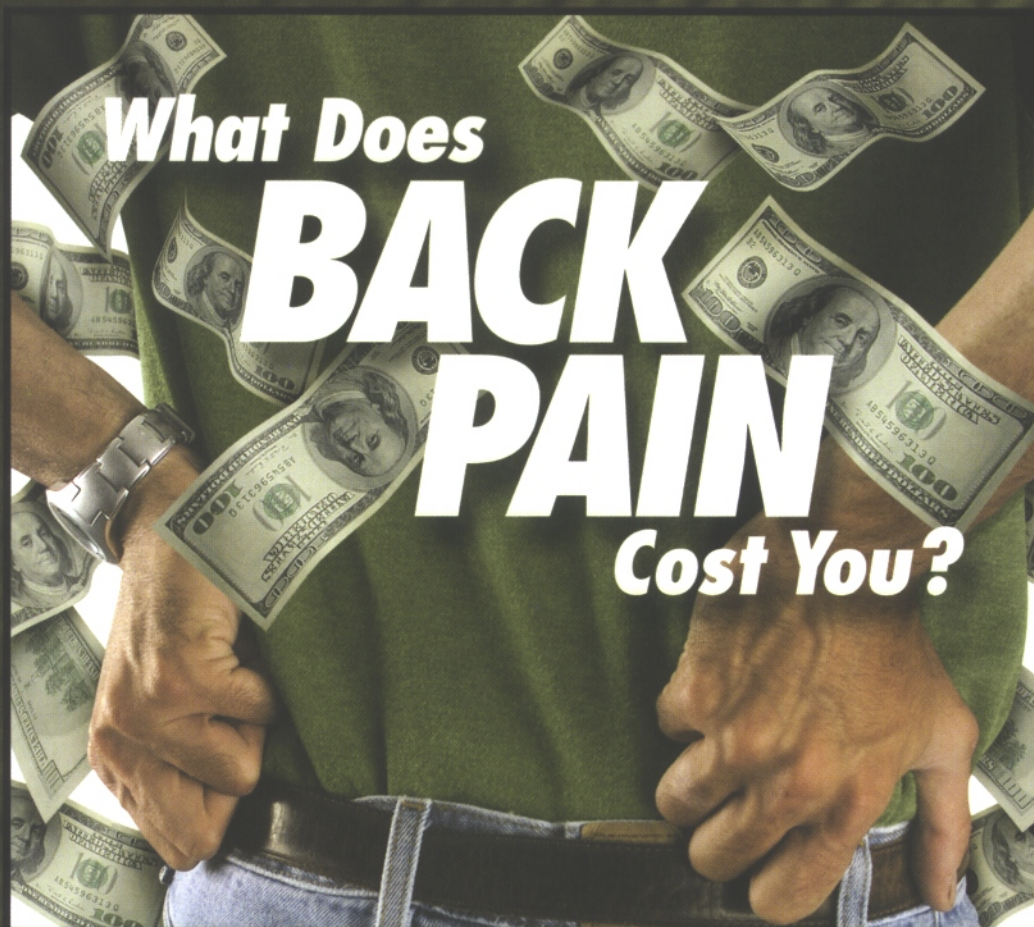


### Base Swivel Kits - Driver and Passenger

NOTE: Swivel Kits increase height 1.2 inches

Passenger: # 229729-02

Driver: # 229729-01



# What Does **BACK PAIN** Cost You?

## **BackCycler® Continuous Passive Motion**

One-third have experienced some type of back pain while driving, and one-third of all adults have had back pain in the past month! A worker compensation back injury claim in the long haul trucking industry costs an average of \$113,084 per claim.

## **What does this mean to you?**

Reducing back problems could lower your costs by increasing driver comfort, productivity and safety. This is why the BackCycler's® air-driven spinal motion makes sense.

## **Sitting hurts because your body constantly compresses your spine in one position:**

- Straining muscles and ligaments
- Squeezing spinal discs toward sensitive nerves
- Cutting circulation through the discs

## **The traditional ways to reduce spinal strain are:**

- Reclining (which cannot be done while driving a truck)
- Lumbar support (too much, too little or too long becomes uncomfortable)

## **The BackCycler® continuous spinal motion is key to comfort by:**

- Reducing muscle & ligament strain
- Allowing alternating muscles and ligaments to share strain/rest cycles
- Reducing disc pressure of the discs against the nerves
- Improving disc circulation



**NATIONAL SEATING**